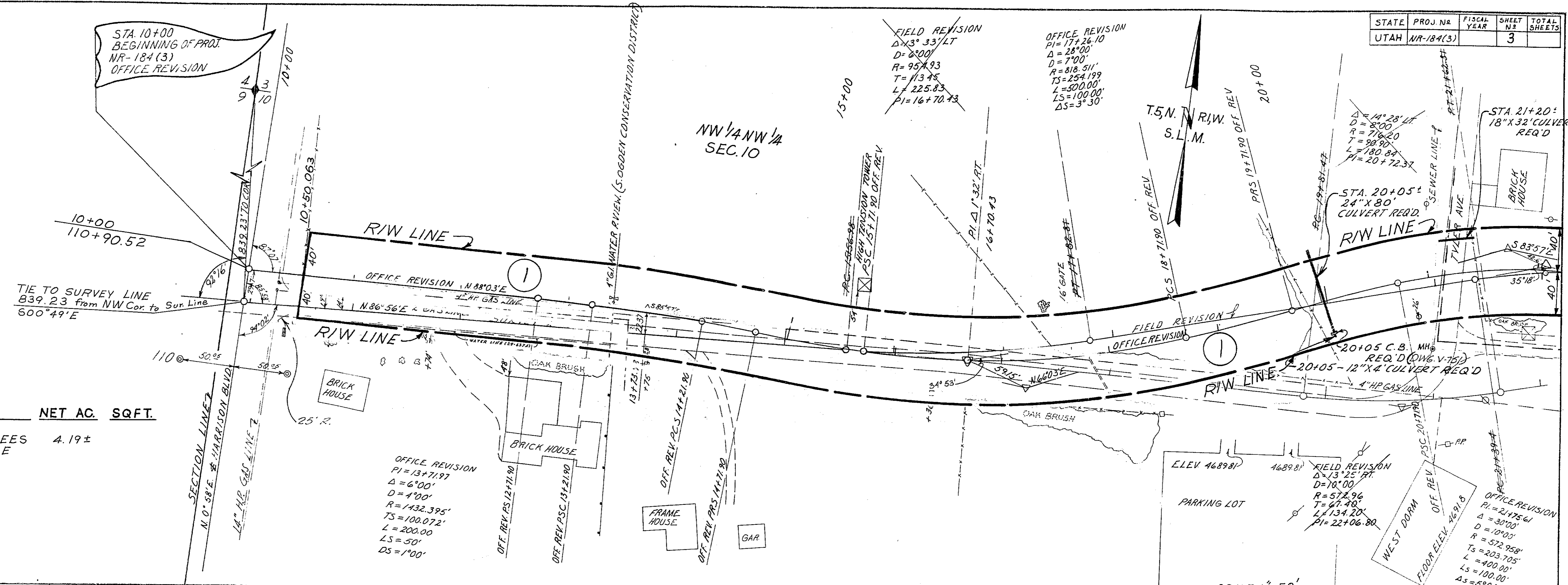
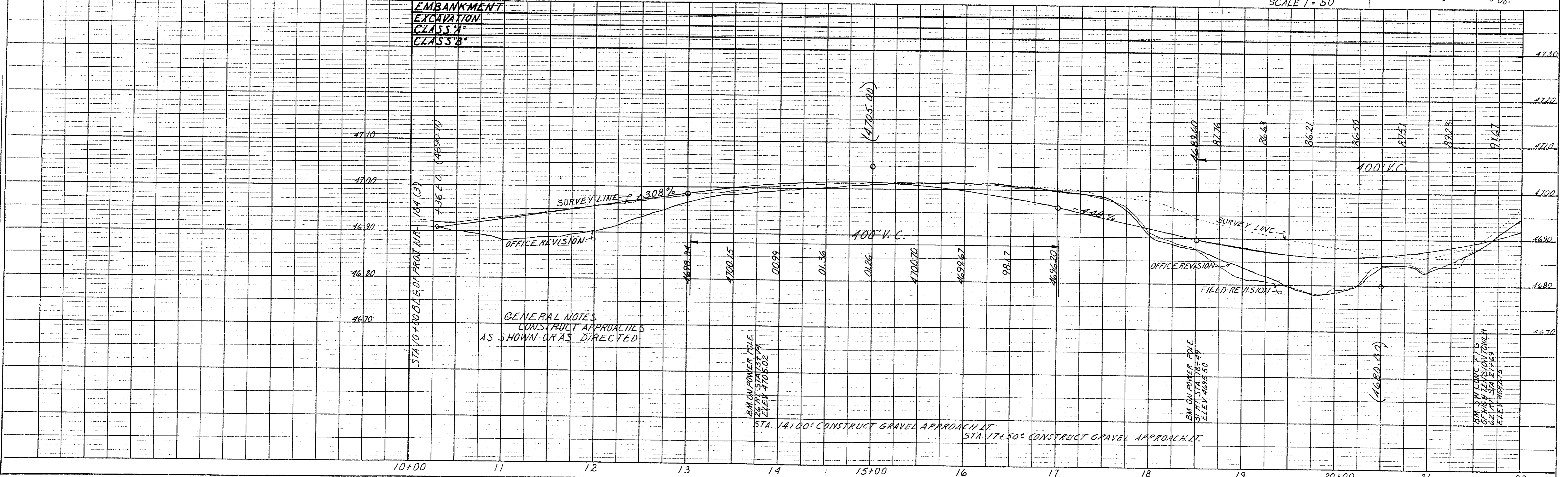


DATE	BY	REVISION
10/23	W.M. MAGUIRE	
10/23	J. SWANSON	
10/23	SHEPHERD SAUNDERS	

PARCEL NO.	OWNER	NET AC.	SQFT.
184:1	BOARD OF TRUSTEES FOR WEBER COLLEGE	4.19±	



EMBANKMENT
EXCAVATION
CLASS 'A'
CLASS 'B'



GENERAL NOTES
CONSTRUCT APPROACHES
AS SHOWN OR AS DIRECTED

Project: NR-184(3)

DATE	BY	REVISION
10/23	W.M. MAGUIRE	
10/23	J. SWANSON	
10/23	SHEPHERD SAUNDERS	

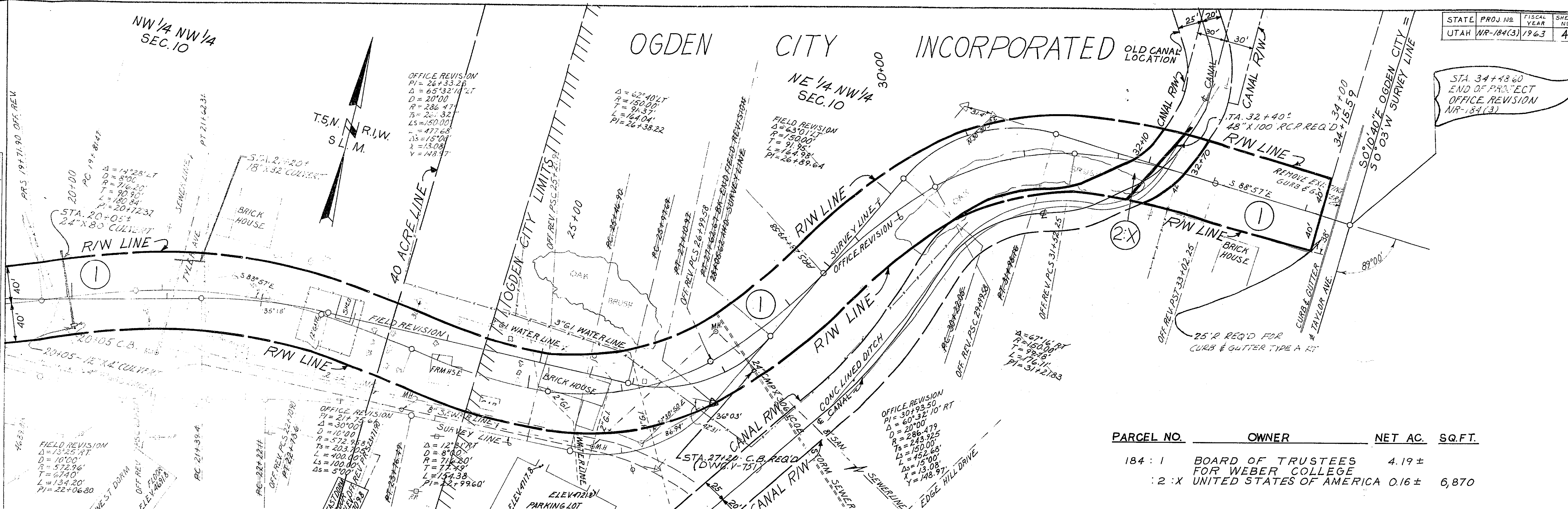
STATE	PROJ. NO.	FISCAL YEAR	SHEET NO.	TOTAL SHEETS
UTAH	NR-184(3)	1963	4	

NW 1/4 NW 1/4 SEC. 10

OGDEN CITY INCORPORATED

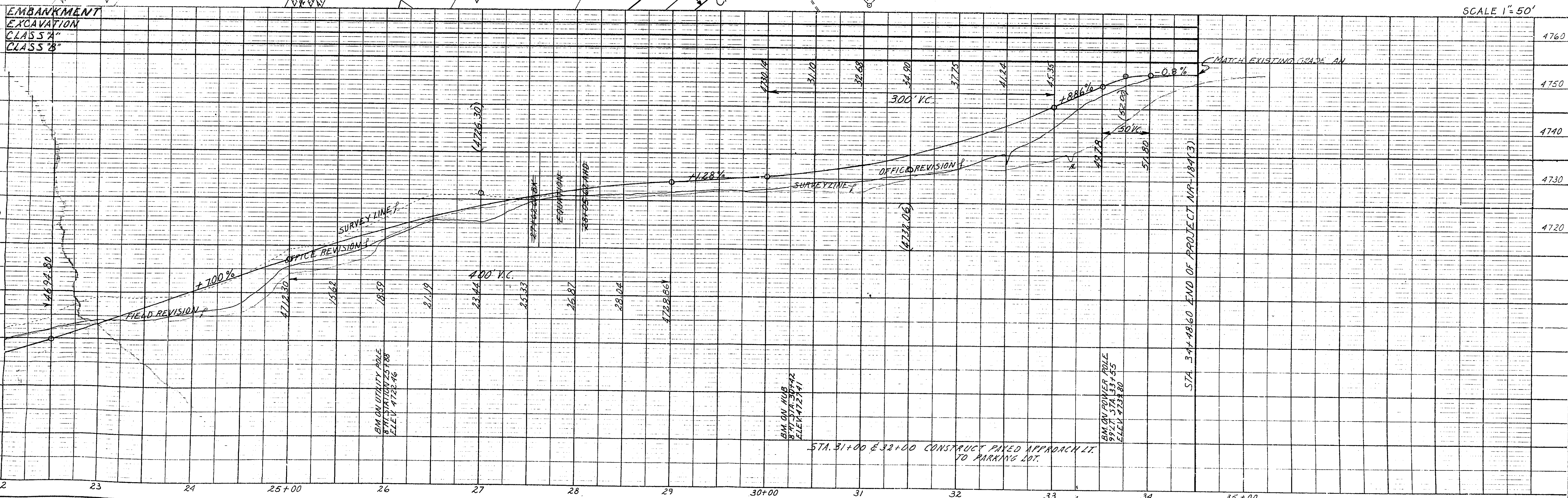
NE 1/4 NW 1/4 SEC. 10

DATE	1963
BY	W. J. SWYDER
CHECKED	W. J. SWYDER
SCALE	AS SHOWN
PROJECT	ST. 34+48.60



PARCEL NO.	OWNER	NET AC.	SQ. FT.
184 : 1	BOARD OF TRUSTEES FOR WEBER COLLEGE	4.19 ±	
2 : X	UNITED STATES OF AMERICA	0.16 ±	6,870

STA 34+48.60
END OF PROJECT
OFFICE REVISION
NR-184(3)



Project: NR-184 (3)
Contract: 057
Scale: 1"=50'

PROFILE	DATE	BY
DATE	1963	W. J. SWYDER